



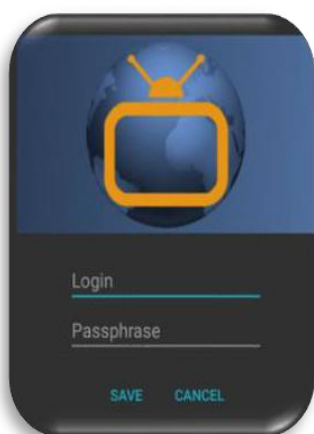
User Guide

**Amazon FireStick
2nd & 3rd Generation**

Amazon Firestick Set up

1. Put the batteries into the remote.
2. Connect the USB cable to the power adapter and the Stick.
3. Plug in the Stick to the TV's HDMI port. Use the HDMI extender cable if it's difficult to plug the Stick into the TV's HDMI port.
4. Plug in the power adapter to the wall. Avoid plugging the USB cable directly into the TV.
5. Turn on your TV and switch to the correct HDMI input.
Tip: Use the remote that came with your TV to select the HDMI source or input.
6. Use your mobile phone to scan QR code to automatically add Wi-Fi settings and complete registration or use remote instead to set up manually.
7. If you choose to use the remote instead, follow the on-screen instructions to connect to Wi-Fi and sign in with your Amazon account. Use your mobile phone or computer to visit the on-screen web address (amazon.com/code) and enter the activation code.
8. Follow the on-screen questions to set up equipment control for devices like soundbars.

Adding StreamDarien to Your Amazon Fire Device



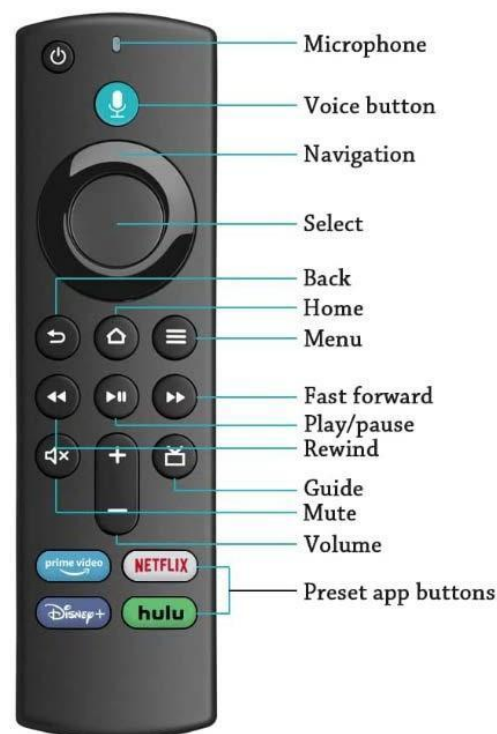
1. On your Fire remote, press the **Home** button and go to **Search**.
2. Use the on-screen keyboard to type **StreamDarien**, then highlight the search icon (magnifying glass) and press the center/select button.
– You may also use **Voice Search** by holding the microphone button and saying the app name.
3. The app will appear under **Apps & Games**. Select it and click **Get** (or **Download**).
4. Once the app finishes installing, open it. You'll be prompted to enter your **Login** and **Passphrase** from your StreamDarien welcome email.
5. After entering the information, select **Save** and you're ready to start streaming.

Using your Amazon Fire Remote

- Use the **Up, Down, Left, or Right** buttons on the remote circle to move and highlight items on the screen.
- Press the **Center** of the remote circle to select or open the highlighted item.
- Press the **Home** button at any time to return to the main home screen.
- Press the **Back** button to go to the previous screen.

Watching Your Streaming TV

- From the **Home Screen**, use the remote to highlight the **StreamDarien** icon. Press the **center/select** button on the remote to open it. This will launch the on-screen **Program Guide**.
- To watch a channel, use the **navigation ring (up or down)** to move to a program highlighted in **blue**.
- Press the **Play/Pause** button to begin watching the program that is currently airing.





Channel Surfing

- While watching a program, press the **top** of the remote circle to go to the **next higher channel number**.
- Press the **bottom** of the remote circle to go to the **next lower channel number**.

Jumping Channels

- While in the **Program Guide**, press and **hold the center (Select) button** on the remote.
- A screen will appear where you can **enter a specific channel number**.
- After entering the number, choose **Next** to jump directly to that channel location in the guide.



Guide Management

- While in the guide, use the **Up, Down, Left, or Right** buttons to scroll through the channel lineup.
- Press the **center/select** button on any highlighted program to open a **Program Details** screen. This screen will display options such as:
 - Watch** (if the program is currently airing)
 - Record**
 - Search**

Watching a Program

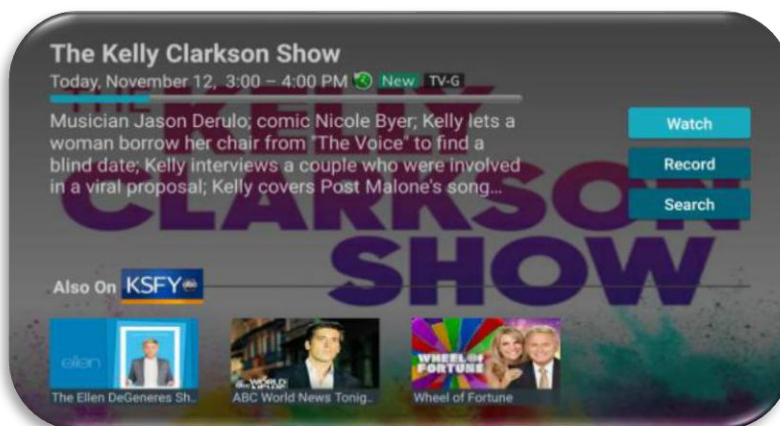
- Highlight **Watch** and press the **center/select** button to start viewing the live program.

Recording a Program

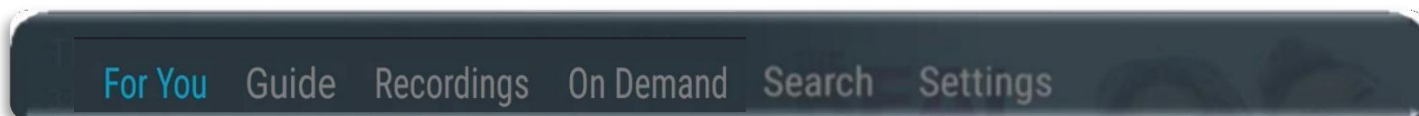
- Highlight **Record** and press the **center/select** button to begin recording.
- For more information, see the **Record Your Programs** section of this guide.

Searching for Showtimes or Recordings

- Select **Search** to view future air dates and times, or to see programs that are scheduled to record or have already been recorded.



Tab Bar

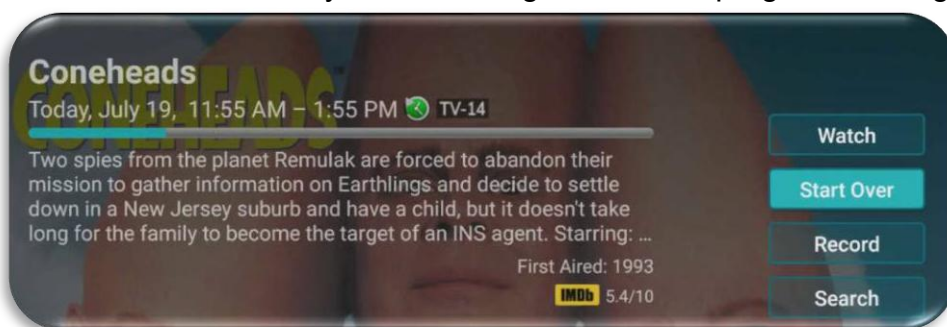


- From the **Program Guide**, press the **Back** button on your remote to open the **Tab Bar**.
- Use the **Left** or **Right** buttons on the remote to scroll through the available options:
 - **For You**
 - **Guide**
 - **Recordings**
 - **Search**
 - **Settings**

Restart TV

To Start a Program over:

1. From the Program Guide, highlight the program you want to watch.
2. Press the center of your remote ring to open the program screen.
3. Use the top or bottom of the remote ring to highlight **Start Over**.
4. Press the center of your remote again, and the program will begin from the start.



Pause Live TV

Life happens- if you need to step away while watching live TV, you can pause the program at any time.

- Press the **Play/Pause** button once to pause.
- When you're ready to continue, press **Play/Pause** again to resume where you left off.

Quick Guide



During a recorded or live program press the menu button to pull down a menu list of your most recently watched channels. Scroll left or right to choose a new channel and press the center of your remote ring to watch it.



For You

The **For You** tab gives you quick access to:

- Channels you've watched
- Popular channels in your area
- Your recordings
- Local weather

To access it:

1. From the Program Guide, press the **Back** button to open the Tab Bar.
2. Press the **left** side of the remote ring to highlight **For You**.
3. Use the remote ring to browse and select what you'd like to watch.

Recording Your Programs

Making a Recording

When you select **Record**, a screen will appear with options for how you'd like to record the program. You can choose to:

- **Series – New Only:** Record only new episodes
- **Series – All:** Record every episode of the series
- **One-Time Recording:** Record just this single program

To learn how to manage or edit your recordings, see the **Series Rules** section of this guide.

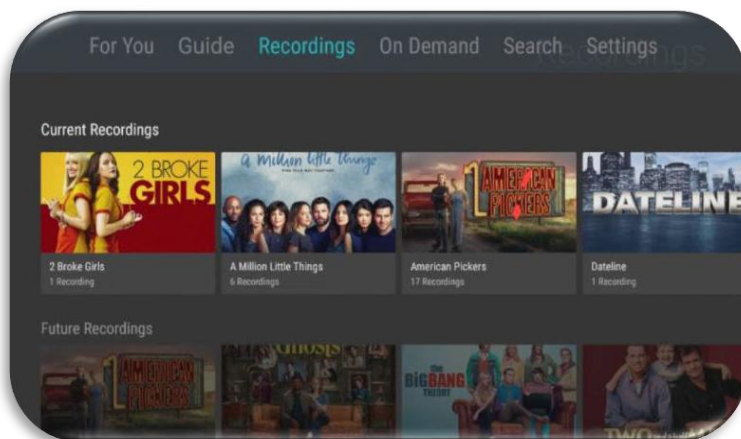


Watching Your Recordings

You can view and watch your recordings from either the **Recordings** tab or the **Search** tab.

From the Recordings Tab:

1. Open the **Tab Bar** and select **Recordings**.
2. You'll see three sections:
 - **Current Recordings**
 - **Future Recordings**
 - **Series Rules**
3. Scroll through **Current Recordings**, highlight the program you want to watch, and press **Play/Pause** to start it.
 - If a program has multiple episodes, highlight the one you want and press **Play/Pause** again.



From the Search Tab:

1. Select **Search** from the Tab Bar.
2. A list of recorded programs will appear.
3. Highlight the program you want to watch, choose **Watch**, and press the **center** of your remote ring to start it.

Managing Your Recordings

Current Recordings: Resume - Start Over - Search - Protect -

Resume or Start Over

- From your list of Current Recordings, if you've already started watching a program, you'll see options to **Resume** or **Start Over**.
- Highlight your choice and press the **center** of the remote ring.

Search for Air Dates and Recordings

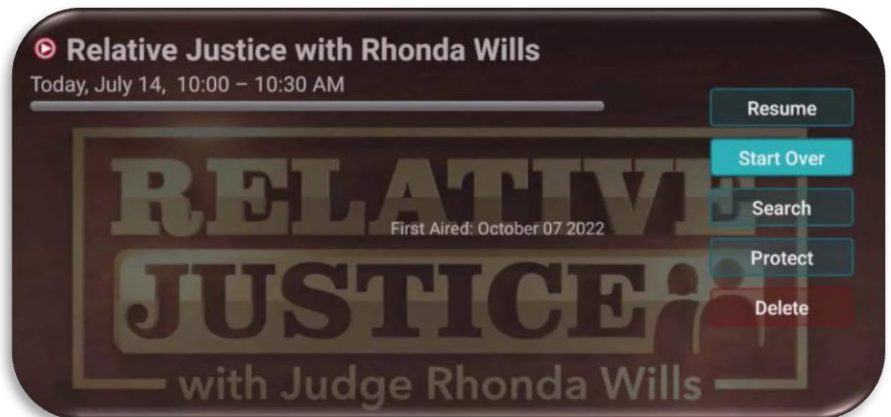
- The **Search** feature will show upcoming live air dates for a program, as well as any recordings you already have for that show or series.

Protect a Recording

- To prevent a program from being accidentally deleted, select **Protect**, choose **Yes**, and press the **center** of the remote ring.

Delete a Recording

- To delete a recorded program, highlight **Delete**.
- You'll be asked to confirm. Select **Yes** to complete the deletion.



Manage Series Program Recordings with Series Rules

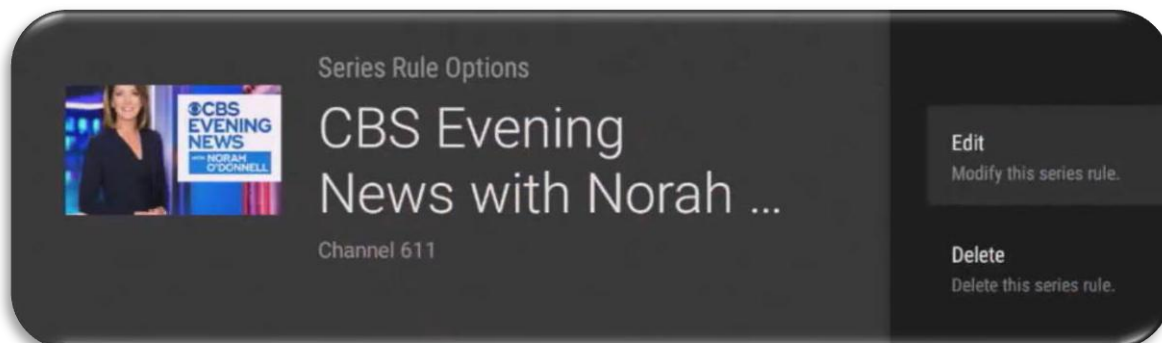
Use the **Series Rules** feature to control how your favorite shows are recorded automatically.

To access it:

- Go to the **Recordings** screen.
- Press the **bottom** of the remote ring until **Series Rules** is highlighted.
- You'll see a list of all series you've scheduled to record.

From here, you can manage how episodes are recorded—such as new episodes only, all episodes, or other recording preferences.

Scroll through the list and highlight a series that you want to manage. Highlight **Edit** and press the center of your remote to open a Series Rules Options screen.



Series Recording Options

When editing a Series Rule, you can customize how episodes are recorded and saved:

Recording Type & Episode Limits

- Choose **Recording Type** to set your preferences:
 - Keep at Most** – Select the maximum number of episodes to save.
 - Only New Episodes** – Records only new airings.
 - All Episodes** – Records every episode.

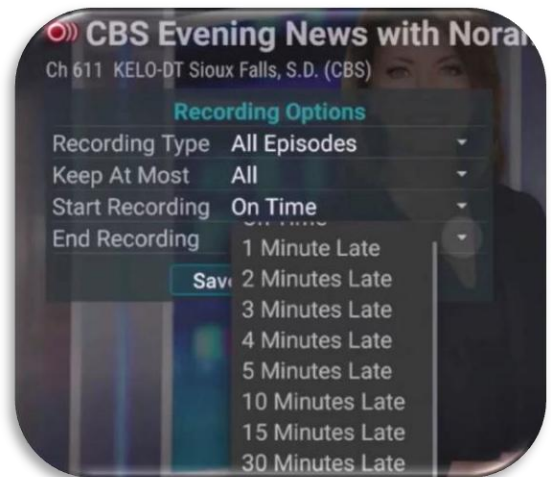


Start and End Time Adjustments

- Use **Start Recording** and **End Recording** to add extra minutes before or after the scheduled time.
- This is especially helpful for programs like sports that may run longer than planned.

Delete a Series Rule

- To remove a Series Rule, highlight **Delete** and press the **center** of your remote.
- This will stop any future recordings but will not delete episodes already recorded.



FAST FORWARD AND REWIND FEATURES

Want to rewatch a big moment or skip ahead?

While watching a live or recorded program:

- Press **Rewind** to go back.
- Press **Fast Forward** to move ahead.

A **Progress Bar** will appear on the screen to show where you are in the program, and a **timer** lets you know how far you are from the end.

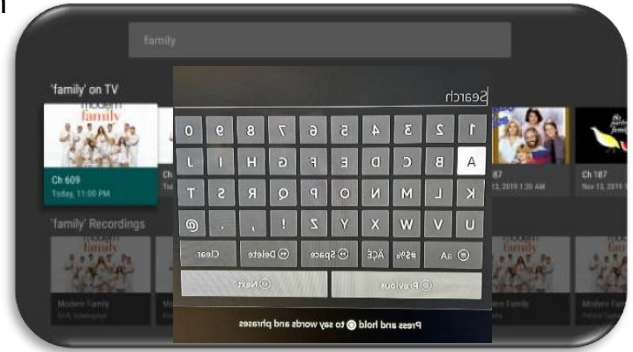


Program Search Feature

You can use the **Search** feature to find **live**, **recorded**, and **upcoming** programs.

How to Access Search:

1. From the **Program Guide**, press the **Back** button to open the **Tab Bar**.
2. Scroll **right** to highlight **Search**.
3. Press the **lower** part of the remote ring, then press the **right** side of the ring to open the on-screen typing pad.



Searching for a Program:

- **Manual Search:** Use the typing pad to enter letters of a program title.
- **Voice Search:** Hold the **Microphone** button and say the program name.
 - *Note: The typing pad must be visible when using voice search.*

The more letters or clearer the title you enter, the more accurate your results will be. You can also search for general terms, like “Today,” to see all programs with that word in the title.

When finished typing, highlight **Next** on the keypad and press the **center** of the remote ring to view results.

Closed Captioning

To turn Closed Captions on or off while watching a program:

1. Press the **Play/Pause** button to bring up the on-screen menu.
2. Press the **bottom** of the remote ring until the **CC icon** is highlighted.
3. Press the **center** of the remote ring to turn CC on.
4. Repeat the same steps to turn CC off.

